



GMT MONTHLY MEMBERSHIP PROGRESS REPORT

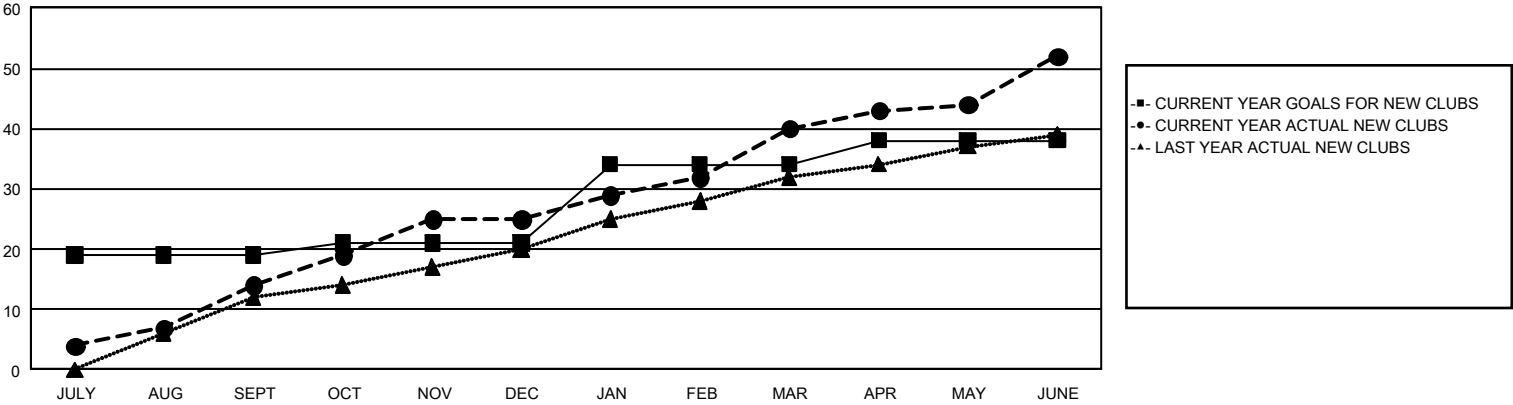
GAT Constitutional Area 5 - Korea

Results as of: 6/30/2025

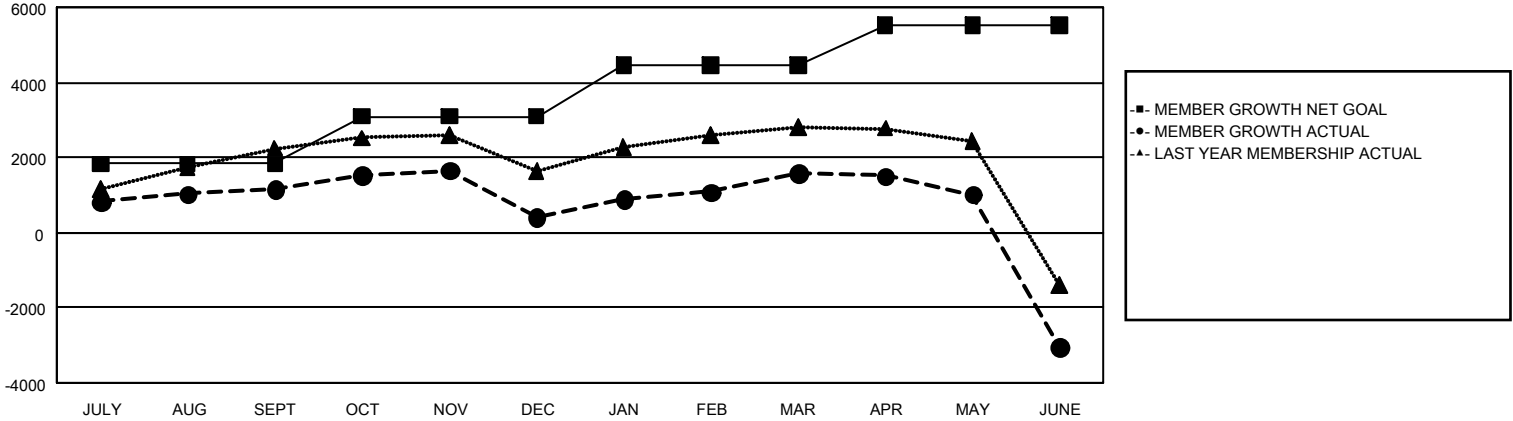
REPORT DOES NOT INCLUDE CLUBS IN UNDISTRICTED AREAS.

Clubs				Members			
RESULTS FOR 2024-2025				RESULTS FOR 2024-2025			
QUARTER	NEW CLUB GOAL	NEW CLUBS	DROPPED CLUBS	QUARTER	MEMBER GROWTH NET GOAL	MEMBER GROWTH ACTUAL	DROPPED MEMBERS ACTUAL (including transfers)
JULY/AUG/SEPT	19	14	8	JULY/AUG/SEPT	1,828	4,470	2,838
OCT/NOV/DEC	2	11	21	OCT/NOV/DEC	1,256	2,270	2,800
JAN/FEB/MAR	13	15	9	JAN/FEB/MAR	1,363	2,730	1,360
APR/MAY/JUNE	4	12	30	APR/MAY/JUNE	1,085	1,955	6,352

GOALS AND ACTUAL NEW CLUBS CUMULATIVE



GOALS AND ACTUAL MEMBERS CUMULATIVE



DROPPED CLUBS: 68		1,636 CLUBS OF 2,064 ADDED 1 OR MORE NEW MEMBERS	<u>GENDER DISTRIBUTION</u>	
			MALE	49,269 (73.43%)
			FEMALE	17,817 (26.56%)
<u>DROPPED MEMBERS</u>		CLICK HERE FOR CUMULATIVE MEMBERSHIP DATA		
DECEASED	260		TOTAL FAMILY UNIT MEMBERS 2,984	
CLUB CANCELLED	762			
OTHER	12,210		FAMILY MEMBERS PAYING HALF DUES 1,710	
TOTAL	13,232			